



Ningbo Greenis Home Appliances Co.,LTD  
Email: [love@greenis.com.cn](mailto:love@greenis.com.cn)  
Web: [www.greenis.com](http://www.greenis.com)

**GREENIS**<sup>®</sup>

PORTABLE BLENDER

# INSTRUCTION MANUAL

Model No: F-2280

Read this instruction manual carefully before using.

## IMPORTANT SAFETY INSTRUCTIONS

**When using electrical appliances, basic safety precautions should always be followed including the following:**

1. Read all instructions before using.
2. To protect against risk of electrical shock, do not put main body (motor) in water or any liquid.
3. Children should be supervised to ensure that they do not play with the appliance.
4. Do not operate any appliance with damaged cord or plug or after the appliance malfunctions, or is dropped or damaged in any manner. Return appliance to the nearest authorized service facility for examination, repair or electrical or mechanical adjustment.
5. If the supply cord is damaged, it must be replaced by the manufacturer, its service agent or similarly qualified persons in order to avoid a hazard.
6. Unplug from outlet when not in use, before assembling or taking off parts and before cleaning.
7. Do not use attachments not recommended or sold by the manufacturer may as it may lead to fire, electric shock or injury.
8. Always ensure your switch the juicer to the off position and the motor has stopped completely before disassembling.
9. Do not insert your fingers or foreign into the juicer while it is in operation. If food becomes lodged in the blend cup, turn blender off and wait for motor to completely stop, then disassemble the blender to remove ingredients.
11. Do not put any parts into the dishwasher.
12. Do not use appliance for other than intended purpose.

13. Lift appliance with the handle only.

14. Do not use appliance for more than 1 minute continuously as the motor may burn out; use it again until the appliance is cool.

15. Do not use the appliance to juice hard materials, including pips, ice, frozen fruit, large seeds. It is only for berries blending.

16. This appliance is not intended for use by persons (including children) with reduced physical, sensory or mental capabilities, or lack of experience and knowledge, unless they have been given supervision or instruction concerning use of the appliance by a person responsible for their safety.

17. Switch off the appliance before changing accessories or approaching parts that move in use.

18. In order to avoid a hazard due to inadvertent resetting of the thermal cutout, this appliance must not be supplied through an external switching device, such

as timer, or connected to a circuit that is regularly switched on and off by the utility.

19. Never disassemble the blend jar or remove the vacuum lid while the blade is running.

20. Stainless steel blade is very sharp, never clean or touch it by finger.

21. Never press the blend button when the cup is removed.

22. Dispose of waste household appliance products in accordance with relevant regulations.

**Warning:**

**-For hard fruit and food, add a small amount of water, milk, or other liquid.**

**-Never use the appliance while recharging.**

**-Never press the blend button before assembling the juice cup.**

**-Never put the appliance into any liquid.**

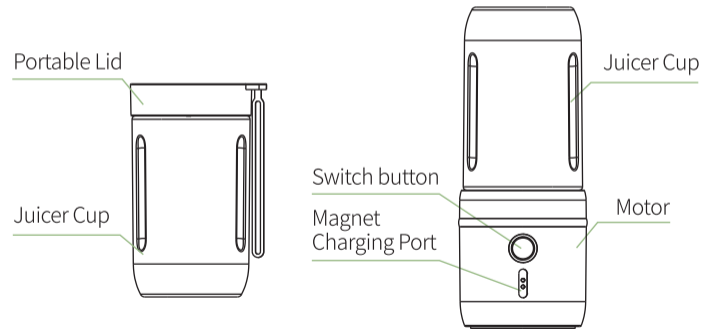
**-Never start the appliance before filling with ingredients.**

## SPECIFICATIONS

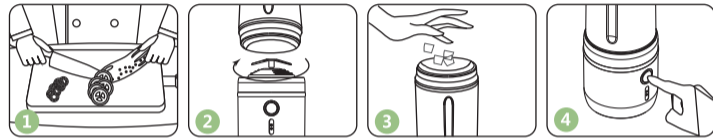
Product Name:	Portable Blender
Model:	F-2280
Capacity:	250ml
Recharging Power:	DC 5V
Battery Capacity:	1500mAh
Motor:	DC3.7V 18000RPM
Jar Material:	Tritan
Weight / Product Size:	450g / 78X78X194mm

## COMPONENTS LIST

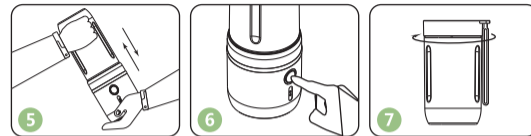
The picture is only for reference, please make the object as the standard.



## OPERATION INSTRUCTIONS



1. Cut the ingredients into chunks at about 1cm. If ingredients have kernel, or very hard, or with thick skin, or with hard shell, please remove them first(Fig.1).
2. Assemble the blend jar onto the main body to ensure the ingredients will not leak out(Fig.2).
3. Fill the ingredients into the blend jar, then fill some water or milk, to make sure that the ingredients is never exceed the 'max' mark(Fig.3).
4. Double press the blender button. The blue light is on then the machine starts



blending; when finished, the light will go off(Fig.4).

5. If the ingredients stuck the blade, hold the cup by one hand and shake the base slightly by another hand, then reboot(See Fig. 5).
6. Double press the blend button and complete the blending for 40 seconds at a time. If you would like to continue to blend, double press the blend button and it will restart.
7. After blending, get the blender upside down, remove the main body from the portable blender and assemble the portable lid onto the juice cup as a travel bottle(Fig.7).

 Attention: Before first using, make sure the battery is full charged.

## CLEANING

1. Fill water into the juice cup, assemble the main body onto the cup, blend the water for 20 seconds; the blade will be cleaned automatically.
2. The main body should be cleaned and wiped by soft towel, never put them into any liquid.



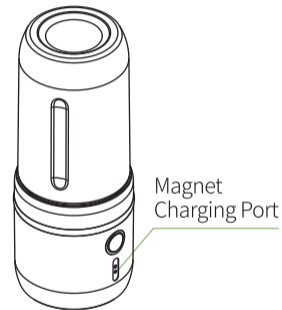
## CHARGING

Use the magnet recharging cable to connect the rechargeable port and Adapter which with DC 5V output.

Charging Tips: Overcharge, excessive discharge, excessive electricity, short circuit, reverse charge and so on, which will cause the damage of the battery, and result to ignition, detonation and other security issues.

**Please use the magnet recharging cable included to recharge your blender.**

The appliance is equipped with safety protection device, the battery can be protected by automatic interruption of charge (or discharge) in the above circumstances.



## PROTECTION MOLD AND INDICATION EXPLANATIONS

### 1. Protective Function Tips

Priority Rank	Description	LED Indication	What to Do
1	The juice cup is not assembled properly	The light flashes in red and white	Assemble the juice cup and main body again
2	Ingredients are overfilled	The light flashes in red rapidly	The motor slows down
3	The battery is low	The light flashes in red slowly	Recharge the device

Priority Rank	Description	LED Indication	What to Do
4	Continuous use for a long period of time	The light flashes in white slowly	Let the appliance cool down for 5 minutes

#### Notice:

1. The LED light will indicate what happens to the appliance by priority.
2. That the juice cup is not assembled properly ranks first, and continuous uses for long time ranks last. For example, when the significance the juice cup is not assembled properly and battery low appear at the same time, LED light will flash in red and white; when you assemble the juice cup properly, the light will flashes in red slowly to indicate the battery is low.
3. Charging Mold: The LED light shows red while charging and shows white when charging is completed.

## 2. Normal Functioning Tips

Mold	LED Indication	What to Do
Standby Mold	The light flashes in red slowly	Press the button
Blending	The white light is on	Double press the button
Recharging	The red light is on	Use the USB cable to connect the adaptor
Recharging Complement	The white light is on	The appliance is fully charged
Dormant state	The light goes off	Out of operation for 5 seconds

## 3. Fatigue Protection

When it comes to continuous uses or overloading with ingredients, continuing to use the appliance may lead to overheat or fatigue of the motor. The fatigue protection program inset will protect your blender well.

When you continue to use the machine for 4 times, the appliance will come into fatigue protection mold.

Let the appliance cool down for 5 minutes and retry.



## TROUBLESHOOTING

Problem	Possible Causes	What to Do
Appliance does not work	<ul style="list-style-type: none"><li>- Continuous use for a long period of time</li><li>- The blade is blocked</li><li>- The juice cup is not assembled properly</li><li>- The battery power is low</li></ul>	<ul style="list-style-type: none"><li>- Let the appliance cool down for 10 minutes and then retry</li><li>- Remove the ingredients that are stuck</li><li>- Assemble the juice cup and main body again</li><li>- Recharge the device</li></ul>
Ingredients cannot be blended	<ul style="list-style-type: none"><li>- Overfilled or not enough ingredients</li><li>- Ingredients are too big or too hard</li></ul>	<ul style="list-style-type: none"><li>- The ingredient capacity should be less than the max position but covering the blade</li><li>- Cut into small pieces Fill with some water or other liquid</li></ul>

Problem	Possible Causes	What to Do
Light continue flash but appliance not work	<ul style="list-style-type: none"><li>- Incorrect assembly of the juice cup</li><li>- Battery is low</li><li>- Overloaded cup</li></ul>	<ul style="list-style-type: none"><li>- Reassemble the juice cup</li><li>- Recharge</li><li>- Remove the excess ingredients</li></ul>

印刷说明：

尺寸：140x78mm 彩印