



Ningbo Greenis Home Appliances Co.,LTD

Address: 518 Xinmei Road, National Hi-Tech Zone, Ningbo, Zhejiang, China

Web: www.greenis.com

GREENIS[®]

USB PORTABLE BLENDER

INSTRUCTION MANUAL

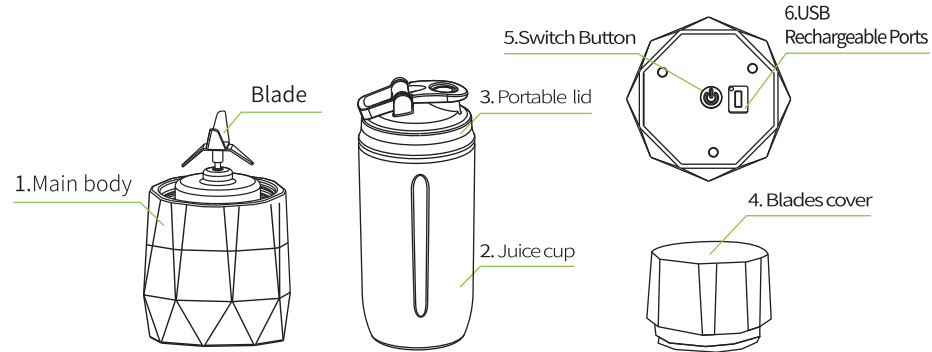
Model No: F-2002s

Read this instruction manual carefully before using.

SPECIFICATIONS

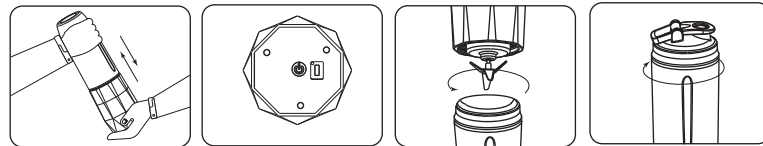
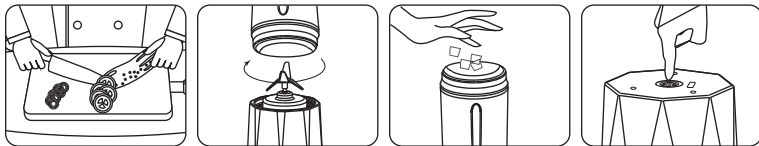
PRODUCT NAME:	USB RECHARGEABLE BLENDER
MODEL:	F-2002s
CAPACITY:	400ml
RECHARGING POWER:	5V DC
BATTERY CAPACITY:	1500mAhx2
MOTOR:	7.4V DC 18000RPM
Weight:	450g
Jar material:	PCTG
Product size:	86X86X230 mm

COMPONENTS LIST



OPERATION INSTRUCTIONS

1. Cut the ingredients into chunks approximately 2cm in size. If the ingredients have pits, are very hard (e.g. frozen solid), a thick skin, or a hard shell, please remove those parts first.
2. Fill the ingredients into the juice cup, then fill with some water or milk making sure that the ingredients never exceed the "Max" mark.
3. Assemble the main body onto the juice cup.
4. Continuously press the blend button for 3 seconds until the blue light flashes; the appliance will start to blend.



5. Shake the blender while blending. The light will go off when blending is complete.
6. Remove the main body from the juice cup and assemble the portable lid onto the juice cup; it will become a portable bottle for carrying easily.

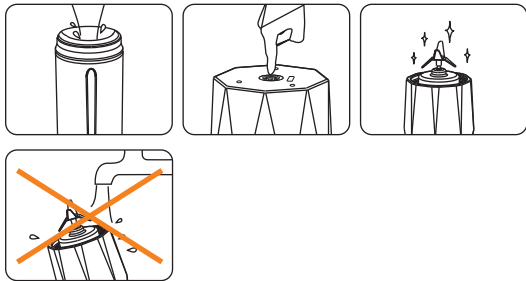


Warning: The appliance must rest 5 minutes for every 4 cycles of blending in order to allow the motor to cool down.

Attention: Before first usage, make sure the battery is fully charged.

CLEANING

- 1.Fill water into the juice cup, assemble the main body onto the cup, blend the water for 20 seconds; the blade will be cleaned automatically.
- 2.The main body should be cleaned and wiped with a soft towel; never put it into any liquid.

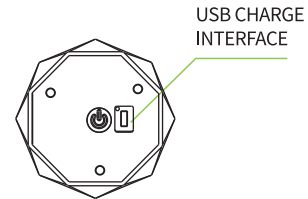


CLEANING

The USB rechargeable ports are on the main body; you should use a USB CABLE to connect the rechargeable port and an adapter with a 5V DC output.

Charging tips: Overcharge, excessive discharge, excessive electricity, short circuit, reverse charge, etc. will cause damage to the battery and may result in ignition, detonation, or other safety hazards.

The appliance is equipped with a safety protection device; the battery can be protected by automatic interruption of charge (or discharge) in the above-mentioned circumstances.



Tips:

- 1.When trying to start the appliance and you see a red light flashing, it means the battery is low; you should recharge the appliance.
- 2.When you recharge the appliance, the red light will flash. When the light turns blue, it means the charge is complete.

IMPORTANT SAFETY INSTRUCTIONS

When using electrical appliances, basic safety precautions should always be followed, including the following:

1. Read all instructions before using.
2. To protect against risk of electrical shock, do not put the main body (motor) into water or any liquid.
3. Children should be supervised to ensure that they do not play with the appliance.
4. Do not operate any appliance with a damaged cord or plug or after the appliance malfunctions, or is dropped or damaged in any way. Return the appliance to the nearest authorized service facility for inspection, repair, or electrical or mechanical adjustment.
5. If the supply cord is damaged, it must be replaced by the manufacturer, its service department, or similarly qualified persons in order to avoid a hazard.

6. Unplug from the outlet when not in use before assembling or taking off parts and prior to cleaning.
7. Do not use attachments that are not recommended or sold by the manufacturer as they may lead to fire, electric shock, or injury.
8. Always make sure to switch the juicer to the "Off" position and that the motor has stopped completely before disassembling.
9. Do not insert your fingers or foreign objects into the juicer while it is in operation. If food becomes lodged in the blender cup, turn the blender off and wait for the motor to completely stop, then disassemble the blender to remove the ingredients.
11. Do not put any parts into the dishwasher.
12. Do not use the appliance for anything other than the intended purpose.
13. Lift the appliance using the handle only.
14. Do not use the appliance for more than 1 minute continuously as the motor may

burn out; use it again after the appliance has cooled down.

15. Do not use the appliance to juice hard materials, including pits, ice, frozen fruit, or large seeds. It is only for the blending of berries.

16. This appliance is not intended for use by persons (including children) with reduced physical, sensory or mental capabilities, or a lack of experience and knowledge, unless they have been given supervision or instruction concerning the use of the appliance by a person responsible for their safety.

17. Switch off the appliance before changing accessories or coming into contact with movable parts when in use.

18. In order to avoid a hazard due to inadvertent resetting of the thermal cutout, this appliance must not be supplied through an external switching device, such as a timer, or connected to a circuit that is regularly switched on and off by the utility.

19. The stainless steel blade is very sharp; never clean or touch it with your fingers.

20. Never press the blend button when the cup has been removed.

21. Dispose of household appliance waste products in accordance with the relevant regulations.

Warning:

-For hard fruit and food, add a small amount of water, milk, or other liquid.

-Never use the appliance while recharging.

-Never press the blend button before assembling the juice cup.

-Never put the appliance into any liquid.

-Never start the appliance before filling with ingredients.

TROUBLESHOOTING

Problem	Possible Causes	What to Do
Appliance does not work	<ul style="list-style-type: none"> - Continuous use for a long period of time - The blade is blocked - The juice cup is not assembled properly - The battery power is low 	<ul style="list-style-type: none"> - Let the appliance cool down for 10 minutes and then retry - Remove the ingredients that are stuck - Assemble the juice cup and main body again - Recharge the device
Ingredients cannot be blended	<ul style="list-style-type: none"> - Overfilled or not enough ingredients - Ingredients are too big or too hard - No liquid in blender 	<ul style="list-style-type: none"> - The ingredient capacity should be less than the max position but covering the blade - Cut into small pieces - Fill with some water or other liquid

Problem	Possible Causes	What to Do
appliance does not work	<ul style="list-style-type: none"> - Incorrect assembly of the juice cup - Battery is low - Overloaded cup 	<ul style="list-style-type: none"> - Reassemble the juice cup - Recharge - Remove the excess ingredients

GREENIS[®] 格丽思

USB便携果汁杯

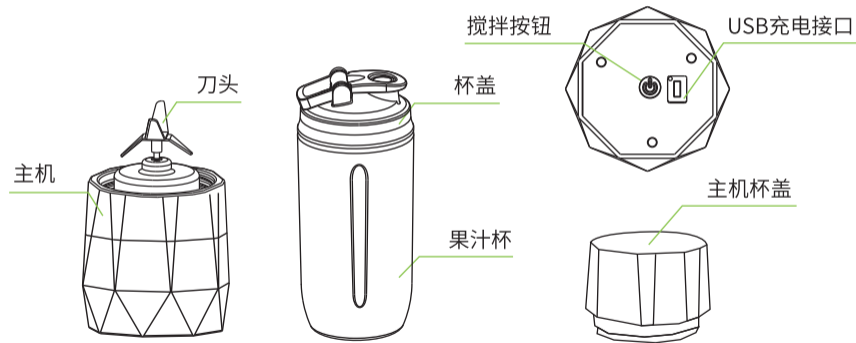
用户操作使用指南

使用前请仔细阅读使用指南 请妥善保存，以备参阅。

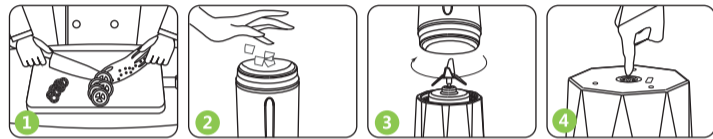
产品规格

产品名称	USB便携果汁杯	产品型号	F-2002s
容量	400ml	重量	450g
执行标准	GB4706.1-2005 GB4706.30-2008 GB4806.7-2016 GB4806.11-2016 GB4806.9-2016		
底座材质	ABS、硅胶	刀片材质	不锈钢
杯身材质	PCTG	产品尺寸	86X86X230mm
充电电源	DC 5V	电池容量	1500mAhx2
电机	DC7.4V 18000RPM		

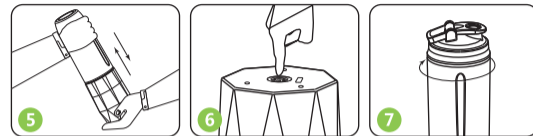
产品构成



产品使用与操作方法



1. 食材切成1cm左右的大小,若有核或者硬壳的蔬果,请先将其除去;
2. 往榨汁杯口放入切好的食材,约占60%,加入纯净水或者牛奶等饮品后,让食材总量约占杯体容量的80%;
3. 将杯子旋紧到主机上,听到“啵”的一声后,表示果汁机可正常工作;
4. 此时亮短暂蓝灯,表明杯子已安装好,长按底部搅拌按钮2秒,闪烁



蓝灯,机器开始运作,搅拌完成后灯灭;

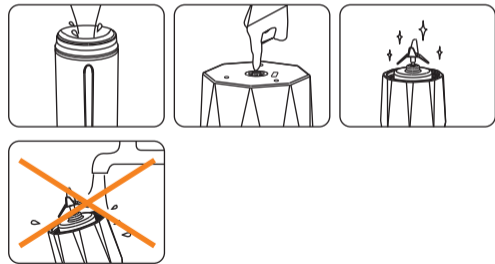
5. 若食材卡在刀间隙,一手握住杯身,一手握紧底座轻微摇晃后重新启动;
6. 长按搅拌按钮2秒,一次完成30秒左右的榨汁过程;如需要继续榨汁请再次长按搅拌按钮2秒,连续榨汁4次后,需要休息5分钟再榨;
7. 食材压榨完毕,将机器倒放,把杯体从主机上旋出,配件果汁杯盖,旋紧到杯子上,直接当可移动水杯使用。



注意:在初次使用前,请确保内置电池充满状态后再使用,并且彻底清洗与食材接触的部件。

榨汁杯清洗方法

- 1.杯身内装一半的水，按住主机开关按钮，启动20秒左右能自动将刀片上附着的食材清洗干净。
- 2.除主机外，都可用水清洗。

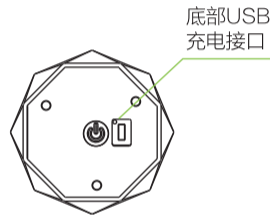


榨汁杯充电方法

- 1.底座下面端口用充电器连接电源即可；也可使用(5V)手机充电器充电。

充电提示：过充电、过放电、过电流、短路、逆充电等会使锂电池受损，导致引燃、引爆等安全问题。

本产品内配有安全防护装置，可在上述情况下自动中断充电(或放电)从而保护电池。



按钮亮灯问题



如果杯子拧紧,底部搅拌按钮亮短暂蓝灯;
如果杯子没有拧到位,底部的搅拌按钮红灯跟蓝灯交替闪烁。

1. 如果在搅拌时电量不足,底部搅拌按钮红灯闪烁提示充电(电机停止工作);
2. 如果电量不足,长按搅拌按钮2秒后,红灯闪烁(电机不工作);
3. 如果所榨食物较硬或切块过大卡住刀片,搅拌按钮红灯闪烁,电机不工作;
4. 机器禁止空转,务必装入食材后再运转机器;
5. 连续工作4次,必须休息5分钟(由程序自动管控);
6. 若下方的USB接口充电时,搅拌按钮亮红灯,充满后亮蓝灯。

注意事项

1. 榨汁杯运转时,切勿将杯身与底座脱离,将手或其他硬物放入杯内,以免发生机器故障对身体造成伤害;
2. 不锈钢刀片非常锋利,请慎重使用,以免造成对身体的伤害;
3. 切勿将机器底座与水或其他液体接触,有触电的危险;
4. 请确保底座电机完全停止运转后再拆卸杯身,以免造成对身体的伤害;
5. 请勿长时间连续使用,以免引起产品性能降低及异常情况的出现;
6. 杯身移除后,请勿按住底座的搅拌按钮;若安全装置故障,将会造成危险;
7. 请将产品放置儿童不宜触及的地方,切勿让肢体不健全或精神上有障碍和缺乏相关知识经验的人群使用。

8. 请不要将杯身及杯盖放置于35°C以上的热水里, 以免受热变形损坏;
9. 请勿将产品进行拆卸, 分解, 改造, 安装, 可能会引起产品故障, 爆炸, 火灾, 触电等;
10. 产品放置和使用时, 应避免直射光线, 远离微波炉, 电热器等发热器具附近, 以免引起产品变形或变色;
11. 请勿将搅拌机任何部位放洗碗机等各类清洗设备中清洗, 不得用钢丝绒, 研磨性清洗剂或香蕉水, 汽油, 去污粉等腐蚀性液体清洗, 以免破坏产品表面;
12. 处理废弃家电产品时, 按照相关规定来进行处理;
13. 请勿将产品用于营业目的; (会导致产品性能下降或使用寿命缩短)

 严禁连续空转, 以免电子元件负荷过大且发热影响使用寿命

故障诊断

症状	确认事项	采取措施
产品不启动	是否长时间连续使用? 是否刀片上卡住食材? 是否杯身挂钩与底座分离? 是否有电?	请待电机冷却后再使用。 请清除残留的食材后再使用。 请将杯身与底座完全安装后再启动。 请充分充电后再使用。
食材不能搅拌	是否食材放的过多或者过少? 是否食材放的过大或者过硬? 是否直接榨含水量少的食材?	请将食材切成小一点或者减少量 请添加水或其他饮品。

症状	确认事项	采取措施
有电机 烧焦味	是否持续使用时间较长?	功率大的电机榨汁机内部,因电机 碳刷摩擦,会发生气味,但不是产品 故障,请放心使用。
灯连续闪烁 马达不启动	安全开关未触动? 电量不足? 负载过重?(提示错误操作)	请重新检查旋转杯身。 请充电。 食材过大,请清理切小重新启动。

温馨提示：最初使用之前，请充满电后使用。

保修卡

品名	USB便携果汁杯	型号	
购买日期	年 月 日	产地	
制造商	宁波格丽思电器有限公司	联系方式	
保修期	1年		

顾客信息：_____ 购买日期：_____

免费保证维修规定

1. 本产品是通过了“电子产品安全管理法”品质基准及本公司自行安全检测的产品；
2. 对于在您正常使用情况下因生产过程的缺陷导致的故障, 在保质期内予以免费换货；
3. 过保质期后一切故障, 需收费维修；
4. 产品质保维修卡不予以重复发行, 请妥善保管好产品服务卡；
5. 本产品是经过严格的品质管理, 通过了相关检验检测的产品。

保质期内以下状况是属于收费维修

- * 因用户不注意(坠落, 强烈冲击, 强行驱动, 破损, 过热)造成的损坏。
- * 因用户自行维修, 改装或加装其他功能后出现的故障。
- * 因不可抗因素(如雷电, 火灾, 地震, 水灾等自然灾害)造成损坏的。
- * 消耗性配件(刀片, 杯身, 电机等)寿命到期。
- * 家用产品用于非家庭使用。(如生产, 经营商用等)
- * 丢失产品质保维修服务卡。
- * 如若不是故障, 申请维修服务时会发生维修费用, 请务必仔细阅读使用说明书后, 确认是故障后, 申请售后服务。

印刷说明：

尺寸：140x78mm 彩印